

Public Address

TOA

H1

TOA

Amplifiers, Speakers & Microphones

	Page
Amplifiers	220
Amplifier Accessories	220
Reflex Horn Speakers	221
Universal & Wide Dispersion Speakers	221
Box Speakers	222
Attenuators	222
Ceiling, Pendant & Projection Speakers	223
Microphones	224
Portable Tuner: UHF Levalier Wireless	224



A2000 Series - front view



A2000 Series - rear view

A2000 Series Basic Package Mixer and Power Amplifiers: (30W-240W)

TOA mixer and power amplifiers are cost-effective professional PA amplifiers, suitable for factories, schools, hospitals, stores and many other commercial applications. Convenient features such as various protective circuits, MIC1 override and overall solid construction are sure to satisfy every commercial user.

The series comes in a full lineup of 2-unit size amplifiers offering a wide range of power outputs from 30W to 240W.

- Cost effective and durable mixer power amplifiers
- Frequency response of 50 Hz to 20,000 Hz
- 3 electronically balanced XLR microphone inputs plus 2 auxiliary inputs, with closed contact muting on Mic 1
- Phantom power is provided to Mic 1 for supplying power to a condenser microphone
- Broad tone control adjustment range of +/-10dB for both bass & treble
- Rack mountable with MB-25B brackets (see Amp Accessories below)
- 100 volt line input on P2240 power amplifier
- Dimensions (mm): 420 (W) × 103 (H) × 262 (D)

EX GST INC GST

\$	A2030	30 WATT MIXER AMPLIFIER
	A2060	60 WATT MIXER AMPLIFIER
	A2120	120 WATT MIXER AMPLIFIER
	A2240	240 WATT MIXER AMPLIFIER
	P2240	240 WATT POWER AMPLIFIER



A1700 SERIES

A1700 Series Microphone Mixer Amplifier (60W-240W)

High-performance mixing-dedicated power amplifiers, ideal for PA applications that value versatility. Specifically designed to satisfy multi-microphone public address requirements of environments such as places of worship and meeting halls; focusses on operational flexibility, plus advanced functions. 2 speaker zones allow user to select each zone independently or simultaneously.

- Multiple microphone inputs
- 9 inputs, 4-6 microphone and 3-5 auxiliary
- Selectable phantom power, balanced or unbalanced
- 2 stereo inputs
- Equipped with REC OUT connectors
- Electronically-balanced combined XLR/ phone jack connector
- Microphone input 5 and 6 are switchable to line inputs
- 2 speakers zones plus 3rd direct zone
- Dimensions (mm): 420 (W) × 107.7 (H) × 367 (D)

EX GST INC GST

\$	A1706	60W AMP 6 MIC 3 AUX 2 ZONE 100V LINE
	A1712	120W AMP 6 MIC 3 AUX 2 ZONE 100V LINE
	A1724	240W AMP 6 MIC 3 AUX 2 ZONE 100V LINE



A1800 SERIES

A1800 Series Mixer Power Amplifier (30W-120W)

Multi-purpose, multi-function mixer/ power amplifiers specifically designed for maximum versatility and cost-effective high performance. Ideal for locations such as schools and offices, and intermediate size environments. Choice of different power outputs offered plus paging and dual zone coverage. 2 speaker zones.

- 3 microphone inputs
- 3 auxiliary inputs
- 2 speakers zones plus 3rd direct zone
- Equalisation, line output, remote control, recording output
- Input priority override and muting
- Dual power supply
- Telephone and emergency inputs
- Individual selectable phantom power
- Chime capability
- Dimensions (mm): 420 (W) × 107.7 (H) × 367 (D)

EX GST INC GST

\$	A1803	30W AMP 3MIC 3 AUX CHIMES 100V LINE
	A1806	60W AMP 3MIC 3 AUX CHIMES 100V LINE
	A1812	120W AMP 3MIC 3 AUX CHIMES 100V LINE

Amplifier Accessories

EX GST INC GST

\$	P1812	120W BOOSTER AMP FOR 1700 &1800 SERIES AMPS
	MB25B	RACK MOUNT BRACKETS, 1700, 1800 & 2000 SERIES COMPATIBLE

SC615
SC630
SC615 & SC630 15 Watt
SC615M & SC630M 30 Watt
Combination Type Reflex Horn Speakers

Reflector horn and rear cover for general use. With horn flare made of aluminium with off-white powder coating. High impedance horn speakers have additional 100 Volt line.

- Rated input: 15W and 30W
- Impedance: 8 ohms
- Frequency response: 280-12,500Hz and 250-10,000Hz
- Sound pressure level: 112db and 113dB
- In compliance with IP 65
- Dimensions (mm): TOA3000/1: 222 (W) × 179 (H) × 234 (D)
TOA3005/6: 285 (W) × 227 (H) × 277 (D)

Low Impedance

EX GST

INC GST

\$ SC615	15 WATT HORN SPEAKER, 112db SPL@ 1W/1M 8 OHM
SC630	30 WATT HORN SPEAKER, 113db SPL@ 1W/1M 8 OHM

High Impedance

EX GST

INC GST

\$ SC615M	15 WATT HORN SPEAKER, 112db SPL@ 1W/1M 100V LINE
SC630M	30 WATT HORN SPEAKER, 113db SPL@ 1W/1M 100V LINE

TC615M
TC630M
TC615M 15 Watt
TC630M 30 Watt
Combination Type Reflex Paging Horn Speakers

Reflector horn and rear cover for general use. With horn flare made of aluminium with off-white powder coating.

- Rated input: 15W and 30W
- Rated impedance: 100V line, 670 ohms; 100V line, 330 ohms
- Frequency response: 250-7,000Hz and 200-6,000Hz
- Sound pressure level: 108db and 110dB
- In compliance with IP65
- Dimensions (mm): TOA2090: 400 (Ø) × 376 (D)
TOA3070: 500 (Ø) × 463 (D)

EX GST

INC GST

\$ TC615M	15 WATT PAGING HORN SPEAKER, 100V LINE
TC630M	30 WATT HORN SPEAKER COMPACT, 100V LINE



BS1030W

BS1030B

BS1030W and BS1030B
Universal Wall Mounted Speakers

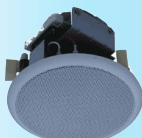
2-way bass reflexive type speaker. Tasteful design optimised for most building interiors and semi-indoor installations. Compact yet powerful 12cm dynamic cone-type woofer and 2.5cm dome tweeter. Available in black or white.

- Rated input: 30W
- Rated impedance: 8 ohms 100V line
- Instant switchover for high impedance or low impedance use
- Weather-resistant for versatile installation choices
- Mounted directly to wall either horizontally or vertically
- Dimensions unit only (mm): 196 (W) × 290 (H) × 150 (D)

EX GST

INC GST

\$ BS1030W	30W WHITE SPEAKER, 2-WAY BASS 100V OR 8 OHM
BS1030B	30W BLACK SPEAKER, 2-WAY BASS 100V OR 8 OHM



F1522SC



F2322C

F1522SC, F2322C,
F2352SC and F2352C
Wide Dispersion Ceiling Speakers

F1522SC: Special compact full-range model designed for low output applications. Wide dispersion ceiling speaker. 10cm cone. 6 Watt impedance. Front tapping adjustment. Full range driver.

F2322C: Cost effective full-range speaker that is ideal for most ceiling sound requirements. Full range wide dispersion ceiling speaker. 12cm cone. 30 Watt impedance.

F2352SC: Perfect for low power use, this 2-way wide dispersion ceiling speaker has increased cost-effectiveness. 12cm cone. 6 Watt impedance.

F2352C: Perfect 2-way wide dispersion ceiling speaker. 12cm cone. 30 Watt impedance.

- Low and high impedance: 6 Watt & 30 Watt
- Wide dispersion - up to 180 degrees
- In-ceiling mounting
- Easy installation
- Front tapping adjustment
- TOA1522 & TOA1525: Open back
- TOA1523 & TOA1524: Back can
- Dimensions (mm): TOA1522: 155 (Ø) × 117 (D)
TOA1523: 230 (Ø) × 200 (D)
TOA1524: 230 (Ø) × 154 (D)
TOA1525: 230 (Ø) × 154 (D)

EX GST

INC GST

\$ F1522SC	6W FULL RANGE WIDE DISPERSION CEILING SPEAKER, 10CM CONE
F2322C	30W FULL RANGE WIDE DISPERSION CEILING SPEAKER, 12CM CONE
F2352SC	6W 2-WAY WIDE DISPERSION CEILING SPEAKER, 12CM CONE
F2352C	30W 2-WAY WIDE DISPERSION CEILING SPEAKER, 12CM CONE

BS633A
BS633AT**BS633A & BS633AT**
Wall Mount Box Speaker

Compact square ABS, off-white resin box with dynamic cone-type speakers. Available with or without attenuator "T"

- Speaker component: 12cm single cone-type
- Rated input: 3W or 6 W versions, max 4.5
- Sensitivity (1W, 1m): 91dB
- Frequency response: 120 – 15,000Hz
- Dimensions (mm): 173 (W) × 195 (H) × 101 (D)

EX GST

INC GST

\$	BS633A	BOX SPEAKER 100V LINE, WALL MOUNT
	BS633AT	BOX SPEAKER 100V LINE, WALL MOUNT WITH ATTENUATOR



BS678

BS678
Wall Mount Box Speaker

A double-cone type speaker with a wooden cabinet that has a stylish, compact and unobtrusive design and that delivers highly cost-effective performance. A push-in type input connector allows easy cable connections and bridge wiring. Selectable input impedance easily adjusted by changing tap position of unit's transformer. Ideal for BGM and announcement applications.

- Speaker component: 16cm double cone-type
- Rated input: 6W (100V line), 3W (70V line)
- Sensitivity (1W, 1m): 94dB (500 – 5,000Hz, pink noise)
- Frequency response: 150 – 20,000Hz (peak –20dB)
- Horizontal or vertical orientation
- Dimensions (mm): 250 (W) × 190 (H) × 110 (D)

EX GST

INC GST

\$	BS678	WOOD BOX SPEAKER 6W WALL MOUNTED
----	-------	----------------------------------



BS680F

BS680F
Wall Mount Box Speaker

The BS680F is a 16cm twin cone speaker with an all-metal case and grille. Ideally suited for emergency broadcasting and voice alarm installations. Wall mounted and can be orientated either vertically or horizontally, or partially recessed if required.

- Speaker component: 16cm double cone-type
- Rated input: 6W (100V line), 3W (70V line)
- Sensitivity (1W, 1m): 94dB (500 – 5,000Hz, pink noise)
- Frequency response: 150 – 20,000Hz (peak –20dB)
- Connection: Push-in connector (bridging terminal)
- Dimensions (mm): 310 (W) × 190 (H) × 87.2 (D)

EX GST

INC GST

\$	BS680F	METAL BOX SPEAKER 6W 16CM CONE, WALL MOUNT
----	--------	--

BS1034
BS1034S**BS1034 & BS1034S**
Wall Mount Box Speaker

The BS1034 is a 12cm two-way box speaker with a balanced dome tweeter. It is a slim line unit designed to be wall mounted. The enclosure is made from HIPS resin with a steel plate grille and can be orientated either vertically or horizontally. A silver finish is also available in the BS1034S.

- Rated input: 10W (100V line)
- Sensitivity (1m/1W): 90 dB 1 watt/1 metre
- Frequency response: 120 – 20,000 Hz (-20dB)
- Speaker component: Low frequency: 12cm cone-type
- Input connector: M4 screw terminal, distance between barriers: 11mm
- Dimensions (mm): 210 (W) × 330 (H) × 80 (D)

EX GST

INC GST

\$	BS1034	BOX SPEAKER 10W 16CM CONE, WALL MOUNT (WHITE)
	BS1034S	BOX SPEAKER 10W 16CM CONE, WALL MOUNT (SILVER FINISH)

AT063P
AT303P
AT603P**AT063P, AT303P & AT603P Attenuators**

Attenuators are electronic devices reduce the amplitude or power of a signal without appreciably distorting its waveform. These are flush mount wall attenuators and use a transformer which allows connection of a wide range of loads, under 6 watt, under 30 watt and under 60 watt respectively.

- Mounting: Flush wall
- Voltage: 100 Volt
- Volume control: Adjusted in 5 steps
- Terminals: Push-in type
- Each terminal accepts 2 conductors for easy bridging
- Dimensions (mm): 70 (W) × 120 (H) × 55 (D)

EX GST

INC GST

\$	AT063P	6 WATT ATTENUATOR, SPEAKER VOLUME CONTROL
	AT303P	30 WATT ATTENUATOR, SPEAKER VOLUME CONTROL
	AT603P	60 WATT ATTENUATOR, SPEAKER VOLUME CONTROL



PM660XLR

PM660XLR
Desk Paging Microphone

Desk-top type dynamic (moving coil) paging microphone with cardioid polar pattern. Zinc plated steel wire microphone head and main unit in ABS resin steel..

- Short-off press-to-talk switch with locking lever
- Low handling noise
- Frequency range; 100 - 10,000MHz
- Impedance: 600 ohms unbalanced output
- Switch: 1 push to talk switch, 1-locking lever short-off type
- 2.5m single-core shielded cable with phone plug
- Dimension (mm): 100 (W) × 215 (H) × 150 (D)

EX GST

INC GST

\$ PM660XLR

DESK PAGING MIC 600 OHMS 2M CABLE XLR PLUG



WT5810

WT5810
UHF Levaliere Wireless Tuner

Portable wireless tuner with TOA space diversity technology and simple set-up. With rod antennae. Supplied AC/DC adapter must be used for power.

- Channel selectable: 16 channel frequencies
- Tone frequency: 32.768kHz
- Receiving frequency: 692-865MHz, UHF
- Power consumption: 130mA (12VDC)
- Dimensions (mm): 206 (W) × 40.6 (H) × 152.7 (D)

EX GST

INC GST

\$ WT5810

WIRELESS PORTABLE TUNER 16 CHANNEL, UHF



WM5220

WM5220
UHF Handheld Wireless Speech Microphone

Radio handheld microphone with dynamic cardioid microphone element. Uses single AA battery.

- Channel selectable: 16 channel frequencies
- Maximum input level: 130 dB SPL
- Flashing LED low battery indicator
- Up to 150m range in open space (line of sight)
- On/Off switch also keeps mic from rolling when put down
- Dimensions (mm): 52.2 (Ø) × 279.4 (L)

EX GST

INC GST

\$ WM5220

HANDHELD WIRELESS SPEECH MICROPHONE, 16 CHANNEL



WM5320

WM5320
UHF Lavalier (Belt Pack) Wireless Microphone

Electret condenser cardioid microphone element with omnidirectional pattern. Wireless microphone with belt clip rotatable through 360 degrees. With lock-equipped mini-plug microphone (Lavalier) jack. Uses single AA battery.

- Channel selectable: 64 frequencies
- Frequency range: 692 - 865MHz, UHF
- RF carrier power: Under 50mW
- Maximum input level: 110dB SPL
- Battery LR6 (AA) and over 10 hours (alkaline)
- Antenna: Built in
- Cable length: 1.3m
- Dimensions (mm): 62 (W) × 102.5 (H) × 23 (D)

EX GST

INC GST

\$ WM5320

LAVALIERE WIRELESS MICROPHONE 64 CHANNEL, UHF

Notes