



## Steel Door Contact

<sup>3</sup>/<sub>4</sub>" and 1" contacts  
1078/1076 Series

### Overview

The GE Interlogix 1078 Series Steel Door contacts are designed specifically for use in the steel doors commonly found in commercial building applications. The unique housing design features a rugged unibody construction with flexible ribbed sides for quick, secure installation without gluing. The magnet housing isolates the magnet from the surrounding steel for maximum gap distances, both make and break. Over seven models including: Wide Gap, SPDT, DPDT, and Biased for High Security applications make the 1078 Series the most widely used and comprehensive line available.

On available models a terminal connection (T) makes installation easier. Simply strip the wire, insert it into the terminal block and tighten. The terminal accepts any wire size from 14 to 22 gauge, and has a unique one piece design for added strength.

An optional Rare Earth Magnet is available. It is designed for use in metal entry/exit doors with a channel in the top of the door. The magnet eliminates the need to cut a mounting hole in the door channel. The flexible magnet housing can be compressed to accommodate a variety of channel widths for quick, easy installation. Adhesive is recommended.

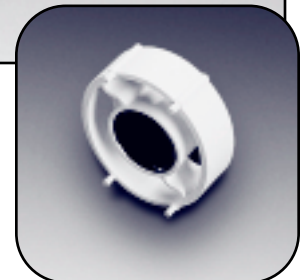
### Architectural and Engineering Specifications

The contact contains a hermetically sealed magnetic reed switch. The reed shall be potted in the contact housing with a polyurethane based compound. Contact and magnet housing shall snap-lock into a 3/4" or 1" dia. hole. Housings shall be molded of flame retardant ABS plastic. Color of housings shall be off-white, grey or mahogany brown. The magnet shall be made of Alnico V. Rare Earth Magnet shall be made of neodymium iron boron.

### Designed for use in Steel Doors

Snap-lock insulation bushing for tight fit and maximum gap in steel.

Both contact and magnet plastic housings are constructed of one piece of thick-walled ABS plastic for maximum strength and durability.



**Optional 1840  
Rare Earth Magnet**

### Standard Features

- Fly leads and terminal options available
- Designed specifically for use in steel doors
- Special ribbed sides allow for easy installation
- Rugged unibody construction for maximum durability and reliability
- Terminal models available for easier installation
- Regular, Wide Gap, SPDT, DPDT, and High Security models available
- Rare Earth Magnet designed for steel door with top channel available

### Model numbers

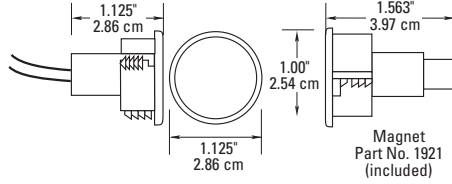
1076, 1076W, 1076C, 1076CW, 1076D, 1078, 1078W, 1078C, 1078CT, (R)1078, 1078CTW

# Steel Door Contact

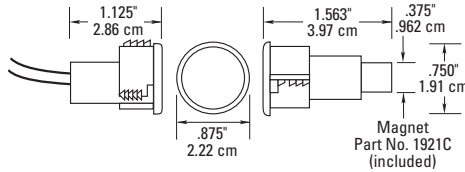
3/4" and 1" contacts  
1078/1076 Series

## Dimensions

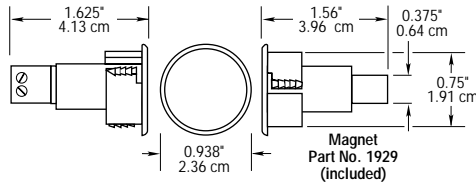
**Models:**  
**(R)1078, 1078W, 1076,**  
**1076W, 1076D**



**Models:**  
**1078C, 1076C,**  
**1076CW, 1076CH**



**Models:**  
**1078CT, 1076CTW,**



*(R)* prefix indicates  
Rare Earth Magnet

## Specifications

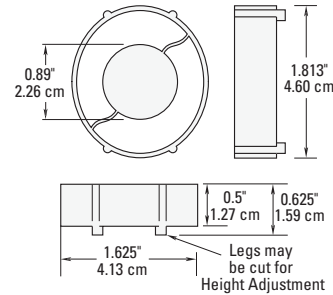
**Form A: (R)1078, 1078W, 1078C, 1078CT, 1078CTW**

**Voltage** 100V AC/DC max.  
**Current** 0.5 A max.  
**Power** 7.5 W max.

**Form C: 1076, 1076W, 1076D, 1076C(D), 1076CW, 1076CH**

**Voltage** 30V AC/DC max.  
**Current** 0.25 A max.  
**Power** 3.0 W max.

## Rare Earth Magnet



Protected by  
U.S. Patent 5,844,458.



## Ordering Information

Model	Dia.	Loop Type	Electrical Config.	Hole Required		Gap Distance*			Color
				Contact	Magnet	Wood*	Steel*	Rare Earth	
1076	1"	Open or Closed	SPDT	1" x 1.125"	1" x 1.563"	1"	Up to 1/2"	Up to 5/8"	M, N, G
1076W	1"	Open or Closed	SPDT	1" x 1.125"	1" x 1.563"	2"	Up to 1"		M, N, G
1076D	1"	Open or Closed	DPDT	1" x 1.125"	1" x 1.563"	3/4"	Up to 3/8"	Up to 5/8"	M, N, G
1078	1"	Closed	N/O	1" x 1.125"	1" x 1.563"	1"	Up to 1/2"	Up to 5/8"	M, N, G
1078W	1"	Closed	N/O	1" x 1.125"	1" x 1.563"	2"	Up to 1"		M, N, G
1076C	3/4"	Open or Closed	SPDT	.75" x 1.125"	.75" x 1.563"	7/8"	Up to 3/8"	Up to 5/8"	M, N, G
1076CW	3/4"	Open or Closed	SPDT	.75" x 1.125"	.75" x 1.563"	2"	Up to 3/4"		M, N
1078C	3/4"	Closed	N/O	.75" x 1.125"	.75" x 1.563"	1/2"	N/A		M, N, G
(R)1078	1"	Closed	N/O	1" x 1.125"	1" x 1.563"	1"	Up to 1/2"	Up to 5/8"	M, N
1078CT	3/4"	Closed	N/O	.75" x 1.625"	.75" x 1.56"	7/8"	1/2"	5/8"	M, N
1078CTW	3/4"	Closed	N/O	.75" x 1.625"	.75" x 1.56"	5/8"	3/4"	N/A	N

\* Gap distances are nominal make distance  $\pm 20\%$ . Gap specifications are for switch to make. Break distance is approximately 1.1 to 1.5 times make.



GE Interlogix