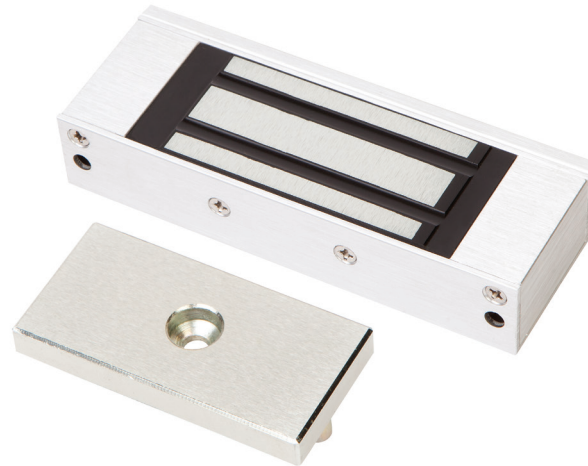


# CCW15S

Electro Magnetic MICRO Lock Non Monitored Single

## CCW15S DESCRIPTION



The **LOX CCW15S** Electro Magnetic MICRO Lock was designed for securing hinged doors on lockers, cabinets and the like. The holding force is **75kg**.



## CCW15S

NON MONITORED SINGLE ELECTRO MAGNETIC MICRO LOCK

## SPECIFICATIONS

CCW15S	SINGLE ELECTRO MAGNETIC MICRO LOCK NON MONITORED
HOLDING STRENGTH	UP TO 75KG, TESTED TO 400.000 CYCLES
VOLTAGE/CURRENT	DUAL VOLTAGE 12/24VDC 12VDC = 240mA 24VDC = 120mA
APPROVALS	CE & C-TICK  
ENVIRONMENTAL	OPERATIONAL TEMPERATURE RANGE - 20 DEG. C TO 60 DEG. C.

**LOX**  
LOCKING

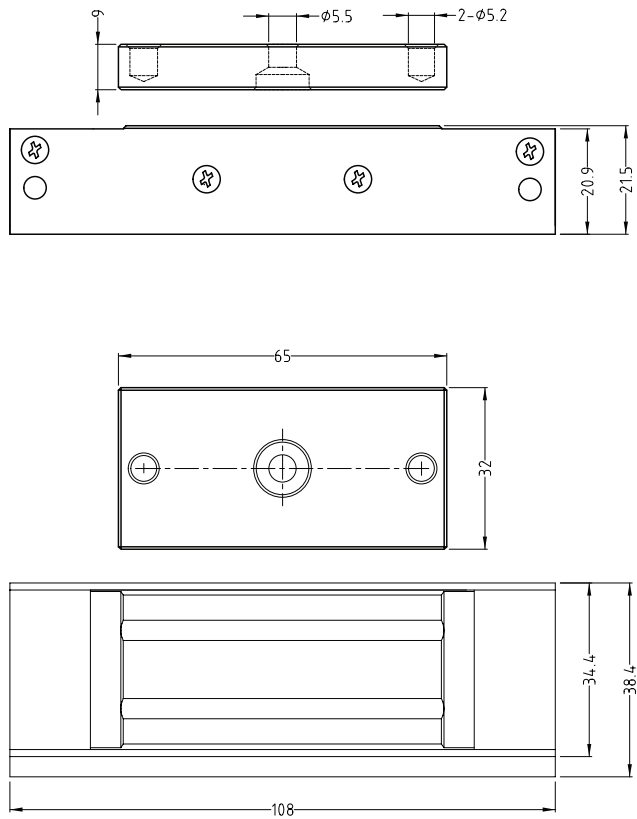
LOX LOCKING PTY LTD | [www.loxlocking.com.au](http://www.loxlocking.com.au)

**LOX**

# CCW15S

Electro Magnetic MICRO Lock Non Monitored Single

## PRODUCT DIMENSIONS



Dimensions (mm)

## CCW15S FACTS

- Built-in varistor (MOV) surge protection
- CE/RCM Approvals
- Lifetime warranty
- No residual magnetism

**LOX**  
LOCKING

LOX LOCKING PTY LTD | [www.loxlocking.com.au](http://www.loxlocking.com.au)

**LOX**