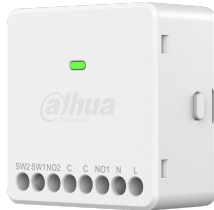


DHI-ARM7022-W2

Wireless Dual-Channel Relay



Series Overview

The Wireless Dual-Channel Relay is a compact dual channel smart switch that monitors power consumption and controls 100–240 VAC loads. It enables remote operation of appliances such as lights, roller shutters and blinds from a smartphone or local switches. Designed for convenience, it also supports automated scenes for intelligent, hands free management of connected devices.

Technical Specification

Port

Wired Input	2 switch inputs, used to control 2 relay output respectively, 100-240VAC.
Wired Output	2 relay outputs, 100-240 VAC/10 A (total 16 A), 0-24 VDC±10%/10 A (total 16 A)

Function

Indicator Light	1 for multiple statuses (pairing, power on)
Button	1
Remote Update	Cloud update

Technical

Test Mode	Yes
Min. Detection Current	> 100 mA

Wireless

Carrier Frequency	433.05 MHz–434.79 MHz
Transmitter Power (EIRP)	Limit 10 mW
Communication Mechanism	Two-way

- Frequency hopping and two-way communication technology ensure that communication is stable.
- Supports jamming detection and communication encryption.
- Supports cloud update and automatically restores when cloud update fails.
- Roller shutter control.
- Supports local operation and remote operation.
- Power detection.
- Supports high-power device access.
- Supports OTA upgrading.

Communication Distance	Up to 1,200 m (3,937.01 ft) in an open space
Encryption Mode	AES128
Frequency Hopping	Yes

General

Power Supply	100-240 VAC, 50/60 Hz
Power Consumption	0.5 W
Operating Temperature	-10 °C to +40 °C (+14 °F to +104 °F)
Operating Humidity	10%–90% (RH)
Product Dimensions	47 mm × 47 mm × 24 mm (1.85" × 1.85" × 0.94") (L × W × H)
Net Weight	57 g (0.13 lb)
Gross Weight	115 g (0.25 lb)
Installation	Bracket mount, adhesive mount, 86 junction box mount, 120 junction box mount
Material	Plastic
Casing Material	PC + GF
Appearance Color	White
Certifications	CE
Anti-corrosion Level	Basic Protection *The products are designed for general use and are applicable even in areas with no specific requirements for anti-corrosion protection.
Storage Temperature	-10 °C to +40 °C (+14 °F to +104 °F)
Storage Humidity	10%–90% (RH)
Packaging Dimensions	99 mm × 40 mm × 136 mm (3.90" × 1.58" × 5.35") (L × W × H, 1 in inner carton)

Ordering Information

Type	Model	Description
Wireless Dual-Channel Relay	DHI-ARM7022-W2	Wireless Dual-Channel Relay
Accessories (Standard)	AM014X-00-DH808AA0	Bracket

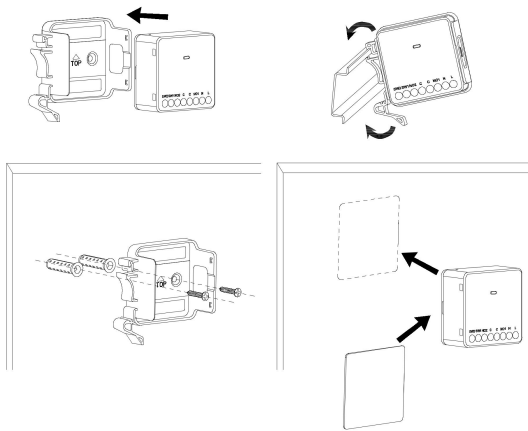
Accessories

Standard:



AM014X-00-DH808AA0
Bracket

Installation



Dimensions (mm[inch])

