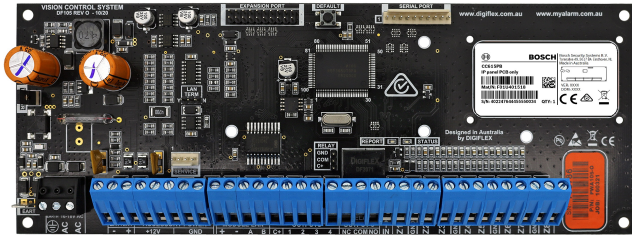


CC615PB IP panel PCB only



The Solution 6000-IP Access and Intrusion alarm control panel offers an extensive feature list including integrated proximity, numerous wire free options, high speed windows programming software and the simplest user/installer interface on the market today.

Functions

Graphic User Interface

The Graphic User Interface incorporates a text driven menu. Color-coded, illuminated keys allow for easy identification and operation in all ambient light conditions and provide a positive feel to the user. Red and green indicators provide easy identification of Armed and Disarmed modes and the built-in sounder provides audible feedback via polyphonic like signaling tones during system operation. The sounder emits a siren sound during alarm condition providing early warning and the volume level is individually programmable for each key pad connected to the system. An enhanced version of the Graphic Key Pad incorporates a built-in proximity reader allowing users to simply present their token to the key pad to arm/disarm and/or unlock a door. Children and the elderly will find this feature extremely easy to use, as no PIN codes are required for operation.

16 On-board Zones (expandable to 144 wired or wireless)

The Solution 6000-IP can be expanded up to 144 wired or wireless zones using zone expanders and/or serial radio receivers. Zone programming determines the panel's response to open/short and tamper conditions on the zone loop. Zones can be programmed individually to monitor all types of security alarms, fire alarms and supervision devices.

- ▶ 16 onboard zones (expandable to 144 wired or wireless), partitionable to 8 areas with 990 PIN, token, keyfob and Fingerprint users
- ▶ Integrated access control for up to 16 doors
- ▶ MiFare Smart Card keypads, weather-proof external metal keypads, Internal & External LAN readers & Fingerprint LAN readers available
- ▶ 5 onboard outputs (expandable to 37)
- ▶ IP Reporting via CSV-IP, Connetix, SIA, MyAlarm

The panel supports multi-vendor wireless devices allowing you to select the most appropriate products for each installation.

Sensor Watch

Sensor Watch monitors each zone's activity while its corresponding area is disarmed. If the zone fails to operate at least once during the sensor watch time period, a system trouble will be initiated.

Chime Mode

Chime mode allows monitoring a zone or group of zones by sounding the keypad buzzer or activating a programmable output. This feature is ideal to monitor business entry doors for customer entry during business hours.

Separate Tamper Inputs

Both the Solution 6000-IP Control Panel and most panel modules feature a separate tamper input making remote locating devices in a secure enclosure easy.

Walk test

Enables a user to test all zones within an area at the same time. When the walk test feature is activated, the code pad will display a list of areas available to walk test. Once the area to test is selected, all zones within the area will be displayed. The user then walks the area and zones successfully tested will be removed from display leaving only those that failed to be activated on the code pad screen.

Partitioning up to 8 Areas

The control panel supports up to 8 separate areas with no restriction on the number of individual zones that can belong in an area. You can arm and disarm the control panel by area. Alternatively, you can arm and disarm several areas at the same time.

Multiple areas can be linked to a shared area which is automatically controlled (hallway or lobby). Area arming may be conditional on other areas (master or associate).

Programmable Outputs

The Solution 6000-IP Control panel supports 5 onboard outputs and is expandable to 37 outputs in total. All outputs are protected and will shut down individually under an overload condition. Output conditions are displayed on the code pad and may be reported externally if required. Outputs may be triggered via an event and or manually and may be programmed for polarity, pulsing or one shot operation.

Integrated Access Control

Access control is no longer reserved only for larger, more expensive systems. Proximity technology from Bosch provides an affordable and effective solution for up to 16 access doors. The new LAN readers include egress and lock control built in, which reduces cost and simplifies installation.

Time Zones

Up to 16 time zones may be implemented. Each time zone can have up to 4 time periods including day of the week and holidays. Time zones may be used to automatically arm/disarm the system at specific times as well control user access to doors or to automatically control outputs.

990 Users with flexible credentials and devices

Up to 990 individual users may be included in the system. Each user can be given a unique PIN code, RF key fob, MiFare Smart Card token, and fingerprint credential if required. The Solution 6000-IP supports variable length PIN codes up to 8 digits.

Variable PIN configuration

Users can be given free choice of PIN length or alternately an exact PIN length requirement may be enforced for higher security applications. PIN codes can be set to expire at a pre-programmed time per user.

Flexible Communications Options

CID, SIA, DOMESTIC and GSM-SMS Text Reporting formats are all standard out of the box and the dual reporting feature allows you to select which reports are sent to which route and in what format. Open / Close reporting can be selected individually for each user and area on the panel allowing the owner to monitor cleaner access, children returning home from school or access to a particular restricted area all via their mobile phone. Interactive voice reporting is also available as an option.

Multi-Tenant

When enabled the Multi-Tenant feature locks the first 144 users on the system to the first 144 zones on the system. Each time a user enters their PIN the corresponding zone is automatically bypassed, allowing the user to access the zone. The Multi-Tenant feature is ideal for applications such as self-storage centers or schools etc.

Delay Trouble Beeps

Setting this option will prevent any system trouble events from sounding the code pad speaker between the hours of 10pm until 7am. During this time, any new trouble event will be shown in the code pad display. If trouble events are still in effect after 7am the code pad will begin to sound the trouble alert to notify the user. This function is ideal for all residential applications.

Event Log

The control panel stores up to 2000 events from all areas. All events are recorded in the log regardless of the reporting setting. The event log may be viewed via the code pad or via a direct or remote connection from the Solution Link programming software.

Advanced RS485 LAN

The control panel communicates with other system module devices via the built in RS485 LAN or Local Area Network.

For increased security, the system uses anti-substitution technology and a proprietary data encryption algorithm to communicate with all LAN modules.

When using the recommended cable types, the LAN can be up to 1200 meters in length, or even greater when LAN isolators are used.

Compatibility list

Accessories

SW500B - Solution Link Software
 SW501B - Site Manager Onsite Administration Software
 CM435B Power Terminal Expander Module
 CM436B - Desktop Reader Interface For 3rd Party Weigand Readers
 CM438B - USB Powered Desktop Reader Interface For DF Format EM Prox Tokens
 CM439B - USB Powered Desktop Reader Interface For DF MiFare Smart Card Tokens
 CM444B Slim Style Relay Card Form C-2 Amp
 CM940B - 6 Way Programmable Relay Card
 CM910 - Combined Direct Link/Flash Programmer - USB
 CM255 - One Use Only Default Key
 CP799 - Installer Service Keypad
 RF110 - Smart RF 5 Button 2-Way Keyfob
 RF110FK - Colour Fascia Kit To Suit RF110 Keyfobs
 RF112W - Smart RF Reed-HW Input+Shock+Pulse
 RF112B - Smart RF Reed-HW Input+Shock+Pulse
 RF112W - Smart RF SM Reed-HW Input+PWR Out
 RF112B - Smart RF SM Reed-HW Input+PWR Out

PR301 - Smart Card Token With Keyring
 PR350 - ISO Smart Card
 PR365 - Adhesive Smart Card Sticker
 PR370 - Dual Smart Card and EM Format Token

Compatible Keypads

CP155B - External Keypad with S/C Reader
 CP156B - Slim Style External Metal Keypad with S/C Reader
 CP722B - Graphic Keypad Smart Card Reader (White)
 CP732B - Graphic Keypad Smart Card Reader (Black)
 PR113B - Internal Smart Card Reader (Black)
 PR114B - Internal Smart Card Reader (White)
 PR115B - External Smart Card Reader (Black)
 PR116B - External Smart Card Reader (White)
 CP741B - Graphic Keypad With Wi-Fi (White)
 CP736B - 3.5" Colour keypad - S/C
 CP737B - 3.5" Colour keypad - S/C, Wi-Fi

Expansion Devices

CM195B - Multi RF Receiver Interface
 CM368B - IP Communications Module 4G GPRS Module
 CM430S - LAN to Ethernet Converter Module
 CM704B - 8/16 Zone Input Expander
 CM705B - Universal Expansion Module
 CM707B - 8/16 Piggy Back Zone Input Expander Module
 CM710B - 4-Way Relay Output Module
 CM720B - 1 Amp Power Supply Module
 CM746B - Plug On 4G GSM/GPRS Module
 CM751B - TCP/IP Interface Module
 CM760B - Real Time Clock Module
 CM797B - LAN Isolator Module
 CM796B - Wiegand to RS485 LAN Interface Module
 CM723B - LAN 5 Amp P/S Module/Dual Battery Chargers
 CM724B - LAN 5 Amp P/S Module/Dual Battery Chargers (Export Model)
 RF120 - Smart RF LAN Base Station Receiver 2-Way
 RF121 - Smart RF LAN Base Station Receiver With 4 Relay Outputs 2-Way
 RF160 - Smart RF 2 Channel Wireless Output Module

Parts included

Panel assembly includes:

Quantity	Component
1	Control panel
1	Manual
1	Resistor Pack

Resistor Pack includes:

Quantity	Component
1	Red Battery Lead

Quantity	Component
1	Black Battery Lead
1	2-Way Shunt With Handle
2	Phillips Pan Head Zinc Plate Screw
10	3K3 - 0.25W +/- 1% Metal Film Resistors
10	6K8 - 0.25W +/- 1% Metal Film Resistors
1	3-Way AC Terminal Block
1	Panel Tamper Switch
1	Tamper Switch Bracket

Technical specifications

Electrical

Battery capacity (Ah)	7.2 Ah
Input voltage (VAC)	16 VAC – 18 VAC
Operating voltage (VDC)	10.2 VDC
Type of power supply	VAC; Battery
Battery Type	Bosch BA 12V 7.2AH or equivalent. (Secondary Power Source).
Battery Charger	Pulse by pulse charger. (Note: Charge voltage cannot be measured unless battery is fitted.)
Continuous Power	1 Amp MAX (combined power drawn from Accessory Power (+12V) LAN Power (Module LAN +) and Output Power (C+) terminals must not exceed 1 Amp.

Environmental

Operating temperature (°C)	0 °C – 55 °C
Operating relative humidity, non-condensing (%)	5% – 85%

Connectivity

	CC615PB IP Panel PCB only
Module Connection (RS485 LAN)	Max. total LAN length using multi strand security cable = 300m

Max. total LAN length using 2 pair twisted shielded data cable (Belden 8723) = 1200m. See installation manual for complete wiring instructions.

Communications

CID, SIA, E-mail, Voice, GMS-SMS, Connetix IP, CSV-IP

Ordering information

CC615PB IP panel PCB only

CC615PB IP panel PCB only

Order number **CC615PB | F.01U.401.518**

Represented by:

Europe, Middle East, Africa:

Bosch Security Systems B.V.
P.O. Box 80002
5600 JB Eindhoven, The Netherlands
Phone: + 31 40 2577 284
www.boschsecurity.com/xc/en/contact/
www.boschsecurity.com

Germany:

Bosch Sicherheitssysteme GmbH
Robert-Bosch-Ring 5
85630 Grasbrunn
Tel.: +49 (0)89 6290 0
Fax: +49 (0)89 6290 1020
de.securitysystems@bosch.com
www.boschsecurity.com

North America:

Bosch Security Systems, LLC
130 Perinton Parkway
Fairport, New York, 14450, USA
Phone: +1 800 289 0096
Fax: +1 585 223 9180
onlinehelp@us.bosch.com
www.boschsecurity.com

Asia-Pacific:

Robert Bosch (SEA) Pte Ltd, Security Systems
11 Bishan Street 21
Singapore 573943
Phone: +65 6571 2808
Fax: +65 6571 2699
www.boschsecurity.com/xc/en/contact/
www.boschsecurity.com