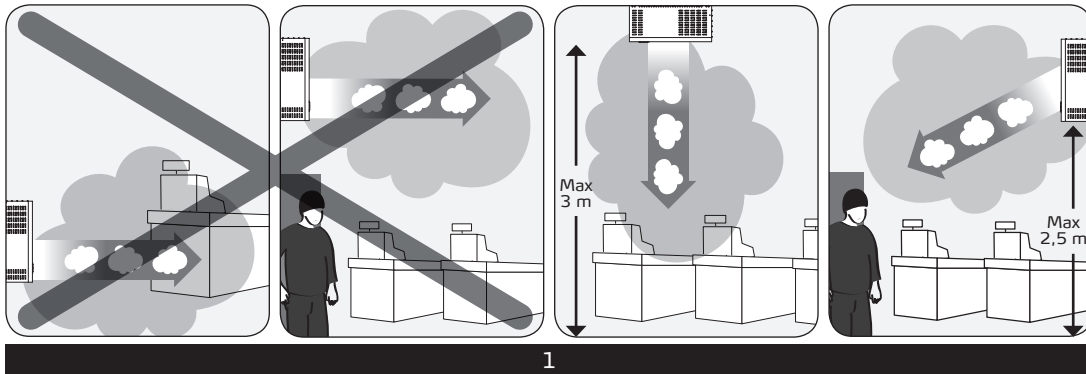
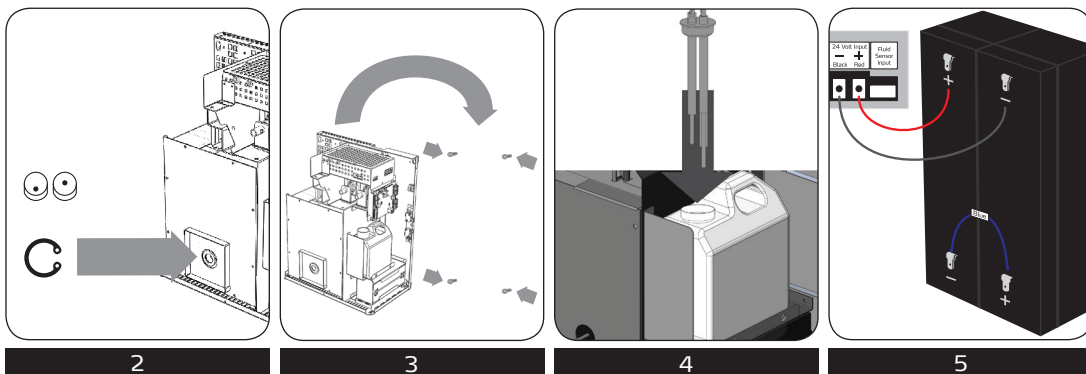


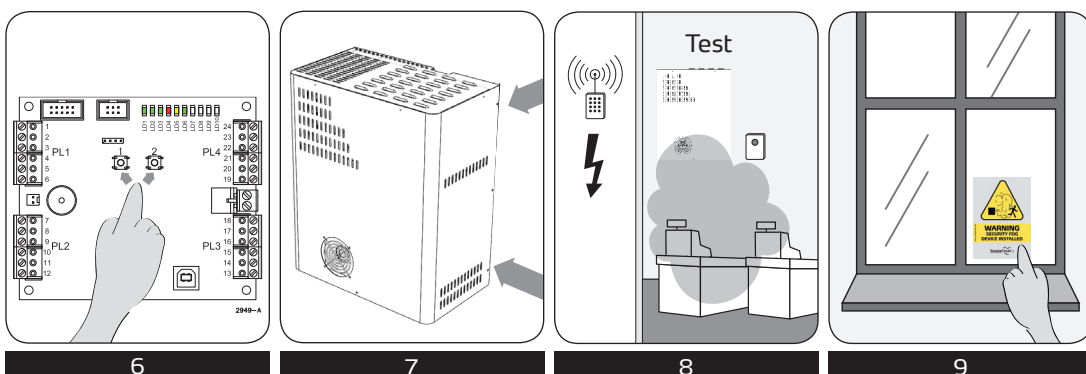
# EASY 2200 Quick Start Guide



1. Check area the unit is to be installed in and decide upon the best position for fog distribution and coverage of any priority areas.  
Observe correct orientation of the unit to be installed.  
Ensure installation height guidelines.



2. Select the correct nozzle for the desired effect from the installation.  
\*\*Note \*\* Ensure the circlip is fitted securely, and the cover is on before activating the unit.
3. Using the template provided mark the fixing positions on the wall. Using fixing appropriate for the weight of the machine secure the unit to the wall as shown.  
\*\* Note \*\* use of a screw that requires an external socket to tighten can lead to difficulties in some areas due to space requirements.  
Screws with PZ, Philips, Allen or Torx heads are more suitable.
4. Install the fluid bottle as shown. \*\* Note \*\* the unit should be serviced annually, the machine should be replaced and the unit test fired to flush out old liquid from internal pipework.
5. Install the batteries (2 x 12V 2.0Ah). Observe correct polarity.  
Use batteries of the same voltage. The batteries should be checked during the annual service and replaced after 2 years maximum.



6. Determine and program the correct runtime for the appropriate level of fog required.  
Connect the unit to the intruder alarm system.
7. Install the cover.
8. Perform full test from the intruder alarm system to ensure correct operation and fog distribution.
9. Mount warning stickers in prominent entry/exit areas of the building being protected.