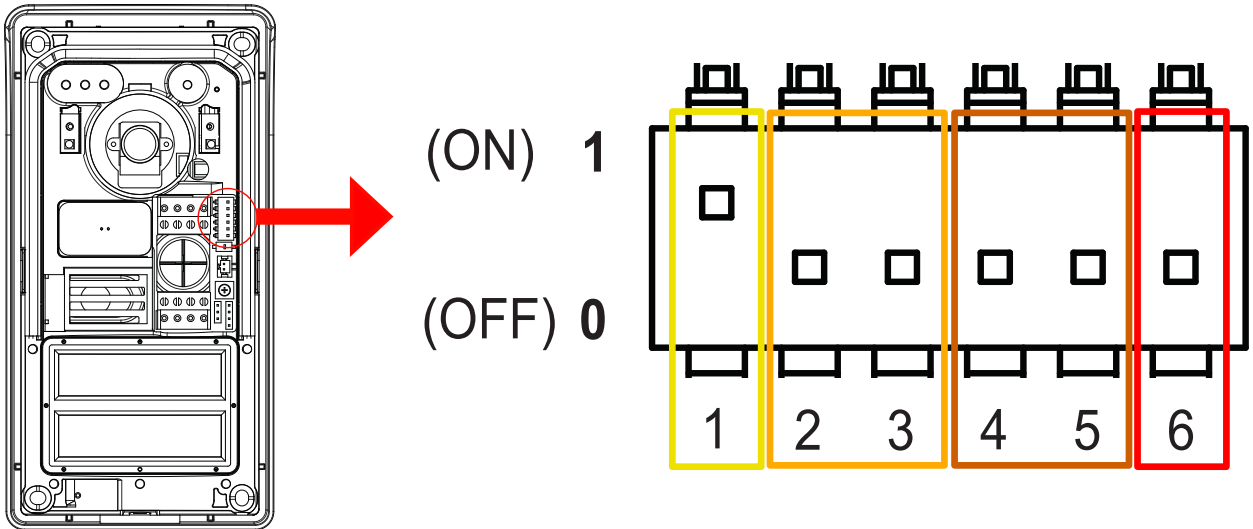


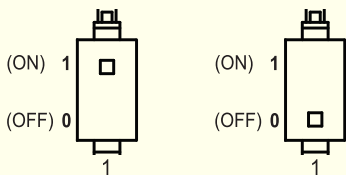
K40980 - K40981 Dipswitch Configuration

The basic functions of the outdoor stations can be configured with the dip switches at the top right hand corner of the door station.



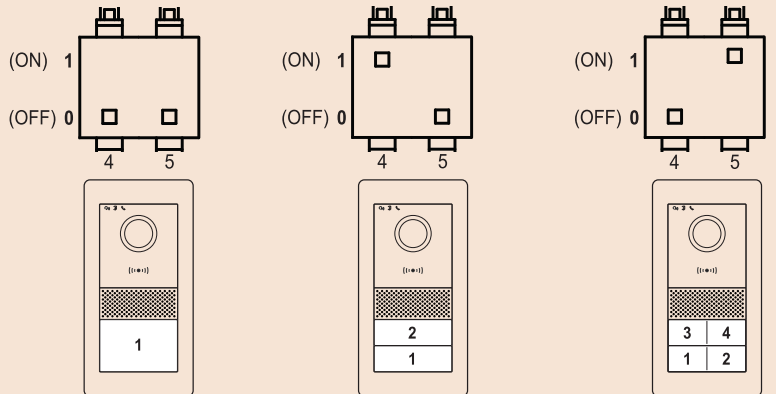
DIP 1:
Sets the outdoor station to Master or Slave

Master Slave



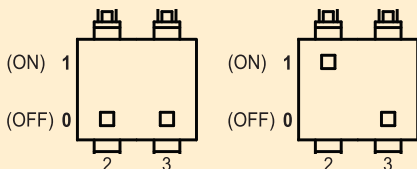
DIP 4-5:
Sets the button configuration

Single Double Quad

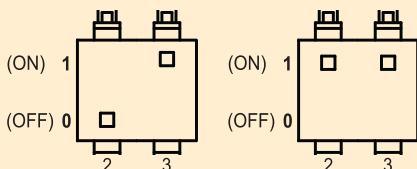


DIP 2-3:
Sets the outdoor station ID

ID 1 ID 2

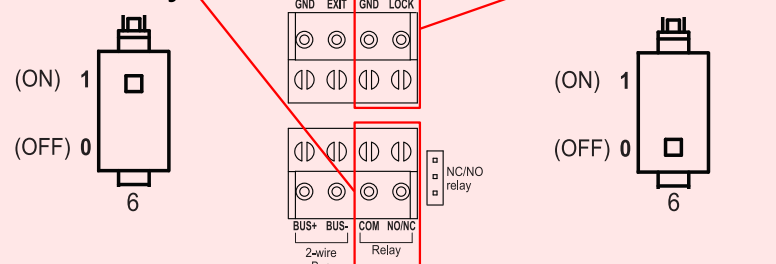


ID 3 ID 4



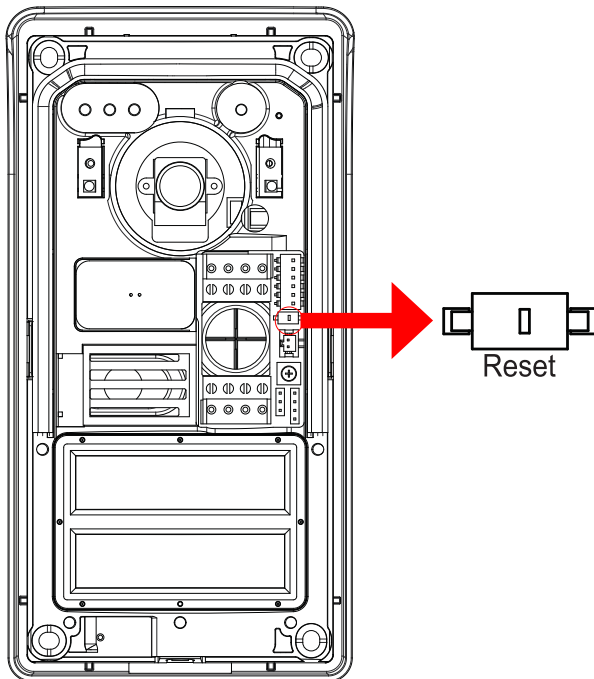
DIP 6:
Sets default locking preference from monitor

Relay Power Out



K40980 - K40981 Reader Configuration

Basic step by step guide for the reader configuration:



Adding Administrations Keys

- 1) Press the reset button twice quickly. 4 *beeps* will sound to confirm
- 2) Present the "Admin Add Key" to the reader
- 3) Present the "Admin Remove Key" to the reader

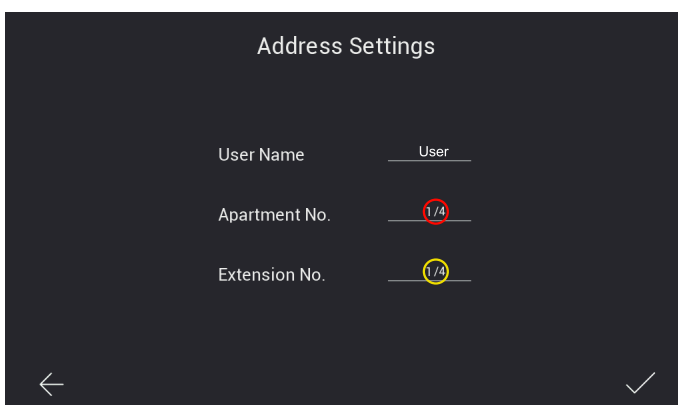
Adding User Keyfobs

- 1) Present the "Admin Add Key" to the reader. Long *beep* will sound to confirm
- 2) Load as many keyfobs required
- 3) Reader will time out after 5 seconds with 4 *beeps*

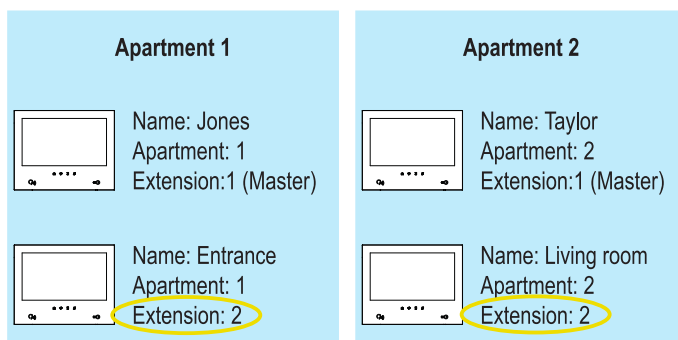
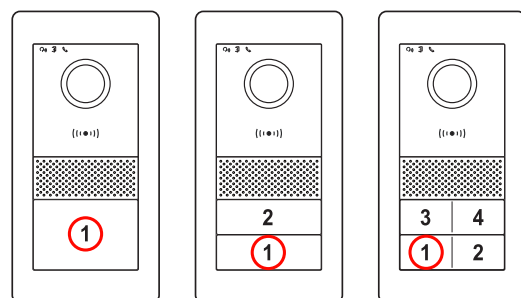
Removing User Keyfobs

- 1) Present the "Admin Remove Key" to the reader
- 2) Present the key you wish to remove
- 3) Reader will time out after 5 seconds with 4 *beeps*

K40980 - K40981 Monitor Programming



Apartment number will match the outdoor station button ID



Extension number refers to any slave monitors within a unit