

Triggered Relay

TRIG 03

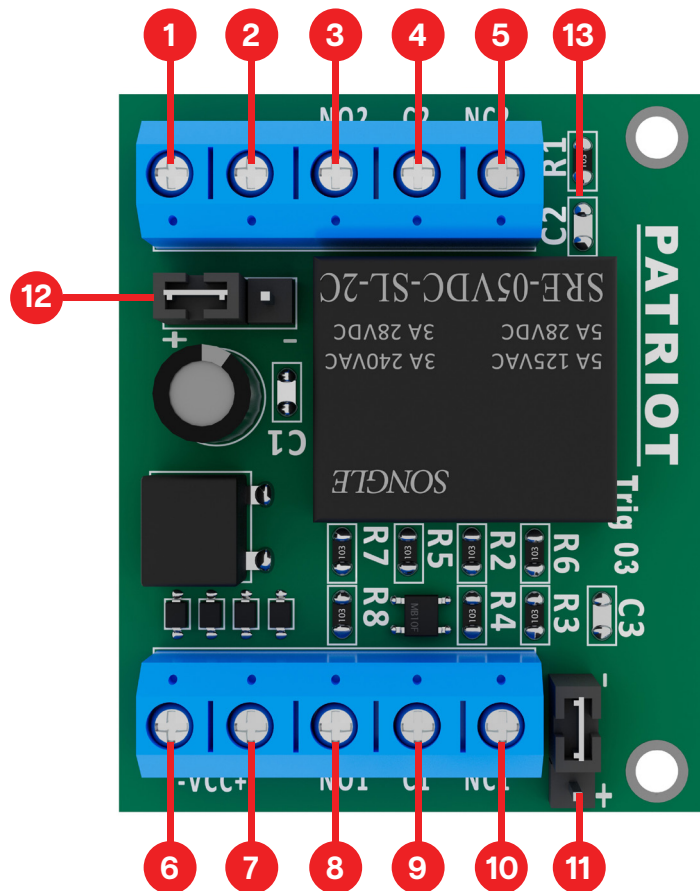
A versatile triggered relay supporting 12-24V DC with options for positive or negative triggering. It features two sets of changeover contacts, an operating LED, and a compact design. Rated at 3A @ 250V AC/28V DC, it's perfect for flexible switching applications.

Features

- ✓ 12-24VDC triggered relay.
- ✓ Option for positive or negative trigger.
- ✓ 2 x sets of change over contacts.

Layout

1. Trigger input (+ Positive)
2. Trigger input (- Negative)
3. Relay 2 - Common
4. Relay 2 - NC
5. Relay 2 - NO
6. 12V input (- Negative)
7. 12V input (+ Positive)
8. Relay 1 - common
9. Relay 1 - NC
10. Relay 1 - NO
11. Positive/Negative trigger link
12. Positive/Negative trigger link
13. Relay operating LED



Specifications

Model: TRIG 03

Input voltage: 8-24V DC or AC

Contact rating: 3A @ 250V AC / 28V DC

Size: 50 x 43 mm